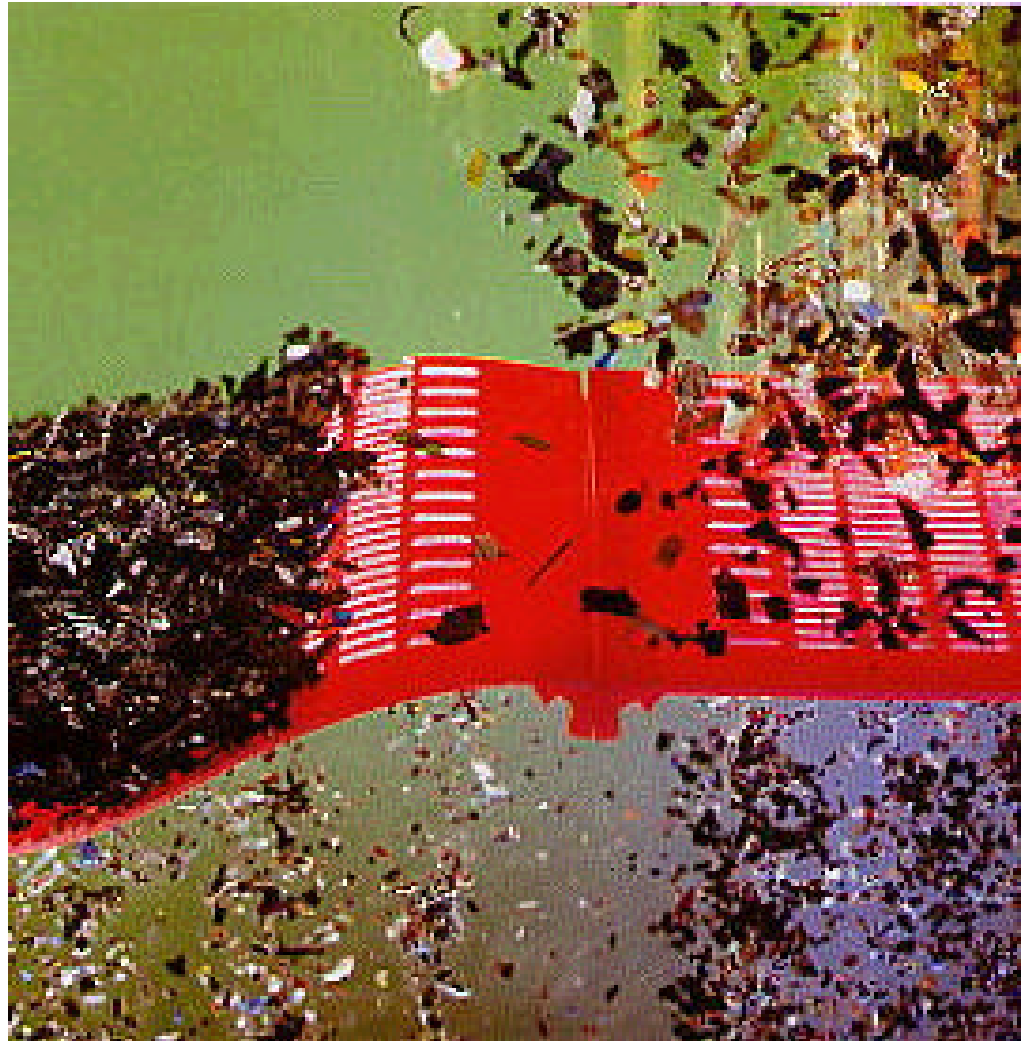




URBAR
ingenieros s.a.



The biviTEC screen

- Fine screening of moist material.
- Eliminates blinding and plugging.
- Large effective screen area-high capacity.
- Highly flexible for varying material requirements.
- Long life polyurethane screen mats.
- Rugged construction / low maintenance.
- Lower energy usage.

Application

There is a growing demand in recycling technology to classify raw and recycling materials, as well as semi-finished and finished products, which poses an insurmountable challenge to most conventional screens.

High material moisture causes material to build up in the screens, spiky or flaky material can get stuck fibrous and cottony substances can become entangled in the screen, and when it becomes completely clogged, screening is no longer possible.



Clavey sand



Wood



Coal



Mixed debris



Peat



Metallic chips

Applications, once judged impossible, can now be accomplished with the bivi-TEC® screen.

Solution

Developed to screen even the most problematic materials, the bivi-TEC® offers a superior screening solution for Superpave sands, scrap materials, compost, incinerator ash and others. The bivi-TEC's unique dual-vibratory screening process eliminates clogging and blinding of the screen openings to save downtime and increase productivity.

Dual vibration from a single drive is the unique feature of the bivi-TEC® Screen. Two weights, vibrating at the same frequency, move relative to each other which tensions and relaxes the screen mats. The linear momentum of both vibrating movements is adjustable, resulting in open screen surfaces and optimal screening performance.

The bivi-TEC® operating principle

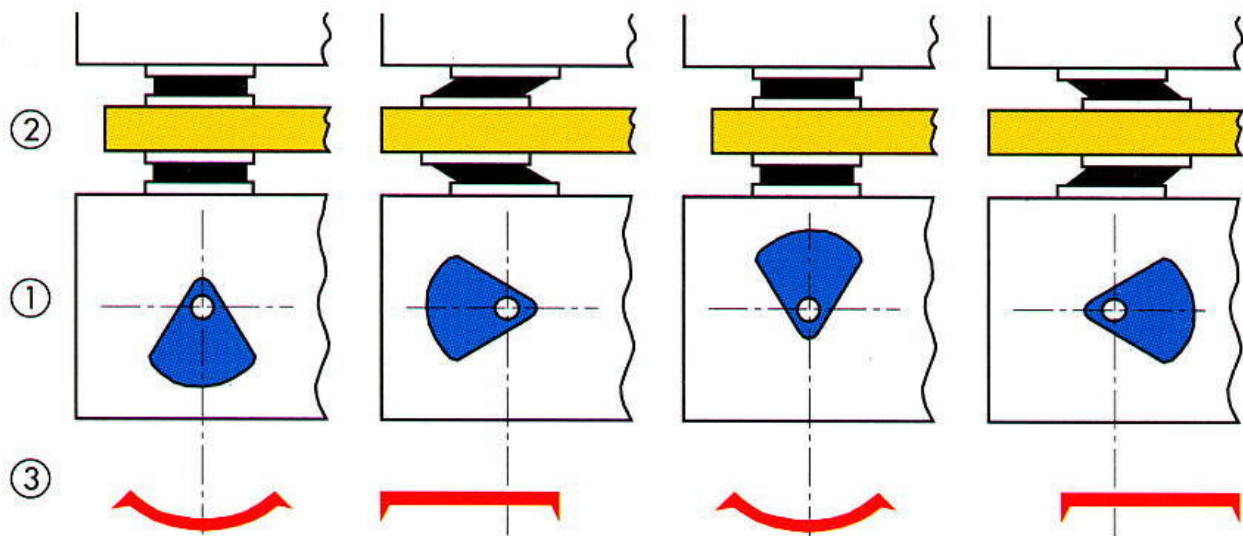
To assure the most effective screening, high-acceleration forces must be transferred to the feed material. The bivi-TEC® Screen achieves these high forces by dynamically tensioning and relaxing the flexible screen mats using a dual-vibration principle. Enhanced by resonance, one drive can produce two vibration movements. The screen box is accelerated approximately 2g's while the screen mats can receive up to 50g's.





Working

With dynamically activated screen mats and the basic oscillatory movement, no more than the energy that is needed to ensure the adequate loosening of screening material and to prevent the clogging of screen mats is communicated to the material being screened.

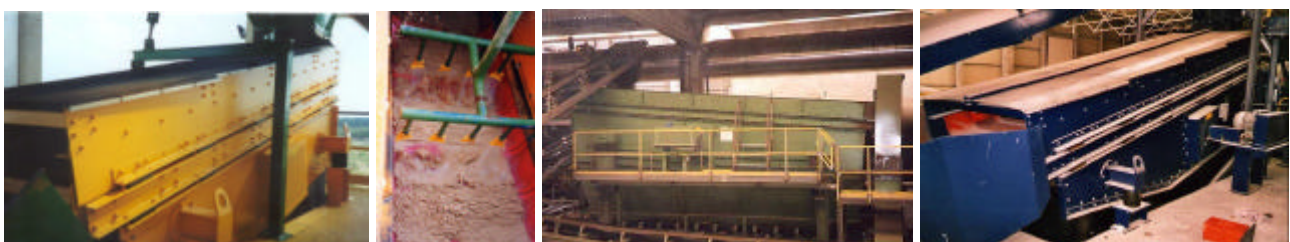


- | | | |
|------------------------|--------------------------------|----------------------------|
| 1. Vibrating weight 1: | circular amplitudes adjustable | $2 a = 4 - 7 \text{ mm}$ |
| 2. Vibrating weight 2: | elliptic movement | $2 a = 12 - 18 \text{ mm}$ |
| 3. Screenmat: | expansion or contraction. | |

The bearings.

The screening machine is bedde on hollow springs made of rubber, because the following advantages will not be provided by helical springs: Hollow springs made of rubber:

- cause lower noise
- have optimal inlet and outlet properties
- provide a higher life cycle.



Description

The bivi-TEC® screens are designed for screen cuts of 35 mesh to 2 inches. The boltless attachment of polyurethane mats guarantees effective screening, rapid changing of screen mat, and elimination of clogging. The 13" wide mats offer greater flexibility in tuning the screen to achieve the final product, resulting in a lower replacement cost. Approximately 1 hour is needed to change 10 square meters of screen surface

bivi-TEC screens work efficiently. Slightly inclined settings are chosen for the screens to warrant frequent grain contact for the best screening result. Lateral proofing in the patented Ox-Horn model prevents grains from escaping and being mismatched besides guarding against wear and tear.

Technical data

Flows:	up to 800 t / h
Size:	up to 80 mm (density > 1,5 t / m ³) up to 200 mm (density < 1,5 t / m ³)
Cutting:	between 0,5 and 150 mm
Useful width:	between 800 and 2700 mm
Useful length:	between 3 and 12 m
Weight:	between 1 and 17 t
Driving motor:	between 2 and 45 kW
Inclined:	between 0° and 18°



The following options are also available: single deck, double deck, rigid scalping deck, portable/stationary units, custom sized to fit your installation...





Examples of applications

