



URBAR
ingenieros s.a.

**Electro-
mechanic
vibrating
feeders**

**Series
ARBS - RBA**



- Driven by two URBAR electric unbalanced motors.
- The feeders can be continuously regulated.
- No maintenance required, except the bearings greasing.
- Any tray type can be made.
- Made following the CE directives.

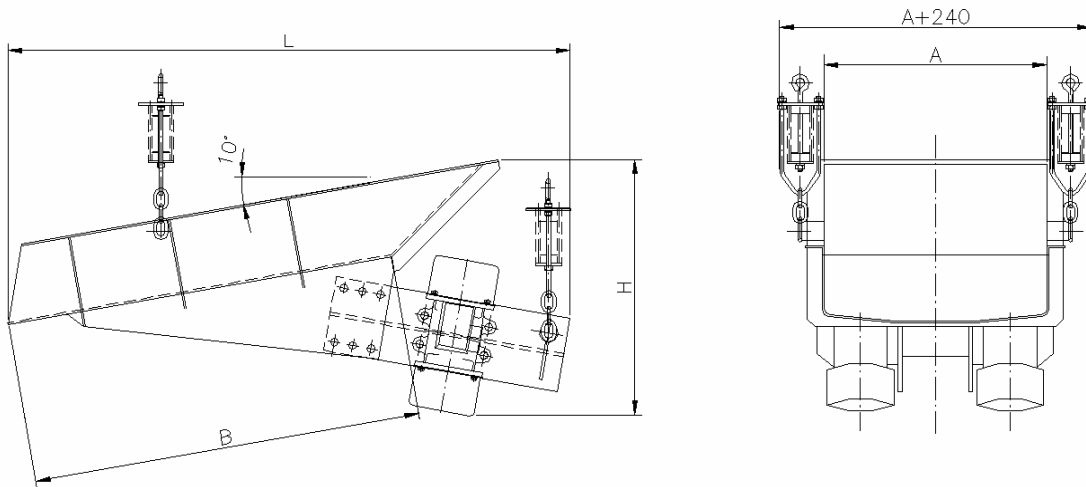


Description

The electromechanical feeders are basically used to extract or dose with a fixed flow the product to be handled.

Nevertheless, when connecting the driving vibrators to a frequency changer, the flow can also be controlled.

Series ARBS



Type	Flow m ³ /h*	Driven by 2 Vibrators	Power kW	Dimensions mm				Weight kg
				A	B	L	H	
ARBS 40 / 80	65	REX-B 40/15	0,6	400	800	1220	600	116
ARBS 50 / 90	80	REX-B 40/15	0,6	500	900	1320	600	124
ARBS 50 / 90	120	REX-C 90/15	1,1	500	900	1320	630	150
ARBS 60 /105	150	REX-C 90/15	1,1	600	1050	1510	675	205
ARBS 70 /120	200	REX-C 90/15	1,1	700	1200	1660	725	210
ARBS 80 /135	250	REX-C 140/15	1,2	800	1350	1835	780	284
ARBS 90 /150	300	REX-C 140/15	1,2	900	1500	2030	830	352
ARBS 90 /150	400	REX-D 250/15	3,7	900	1500	2030	930	485

* Flows obtained with dry sand, size 6-10 mm, bulk density 1,6 t / m³ and a standard tray inclined 10°.

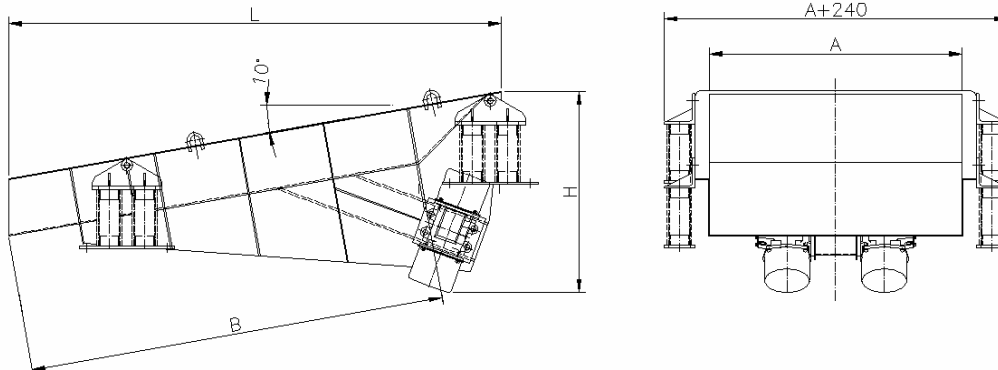


Depending on the needs, any feeder can be manufactured incorporating special trays.



Series RBA

The series RBA is designed in order to be installed supported, but the smallest types can also be suspended.



Type	Flow m ³ /h*	Driven by 2 Vibrators	Power kW	Dimensions mm				Weight kg
				A	B	L	H	
RBA 100/165	260	REX-C 140/15	1,2	1000	1650	2145	880	450
RBA 100/165	400	REX-D 250/15	3,7	1000	1650	2145	965	590
RBA 110/180	260	REX-C 140/15	1,2	1100	1800	2290	900	520
RBA 110/180	500	REX-D 250/15	3,7	1100	1800	2355	990	660
RBA 120/195	500	REX-D 210/10	3,9	1200	1950	2470	980	670
RBA 130/210	500	REX-D 210/10	3,9	1300	2100	2720	1080	790
RBA 150/240	600	REX-E 380/10	7,0	1500	2400	2990	1280	1200
RBA 200/280	750	REX-E 500/10	7,2	2000	2800	3335	1410	1850
RBA 250/300	800	REX-E 500/10	7,2	2500	3000	3530	1475	2300

* Flows obtained with dry sand, size 6-10 mm, bulk density 1,6 t / m³ and a standard tray inclined 10°.



The feeders belonging to the series ARBS and RBA can be equipped, under request, with a non wearing lining. The resulting flows are lower depending on the lining weight. In case of any doubt, please contact our Technical Department.

Questionary

Product to be handled
Required flow

Bulk density
Size

Moisture
Temperature

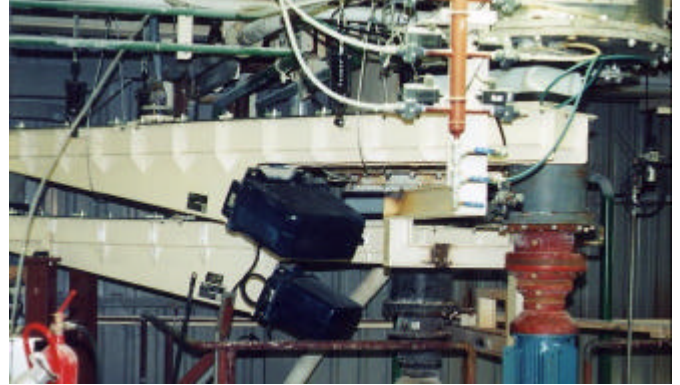
Tray type
Voltage



Some other URBAR vibrating equipment



Electromechanic conveyors



Electromagnetic conveyors



Mechanic screens



Sizers



Non blinding screens



Elevators

