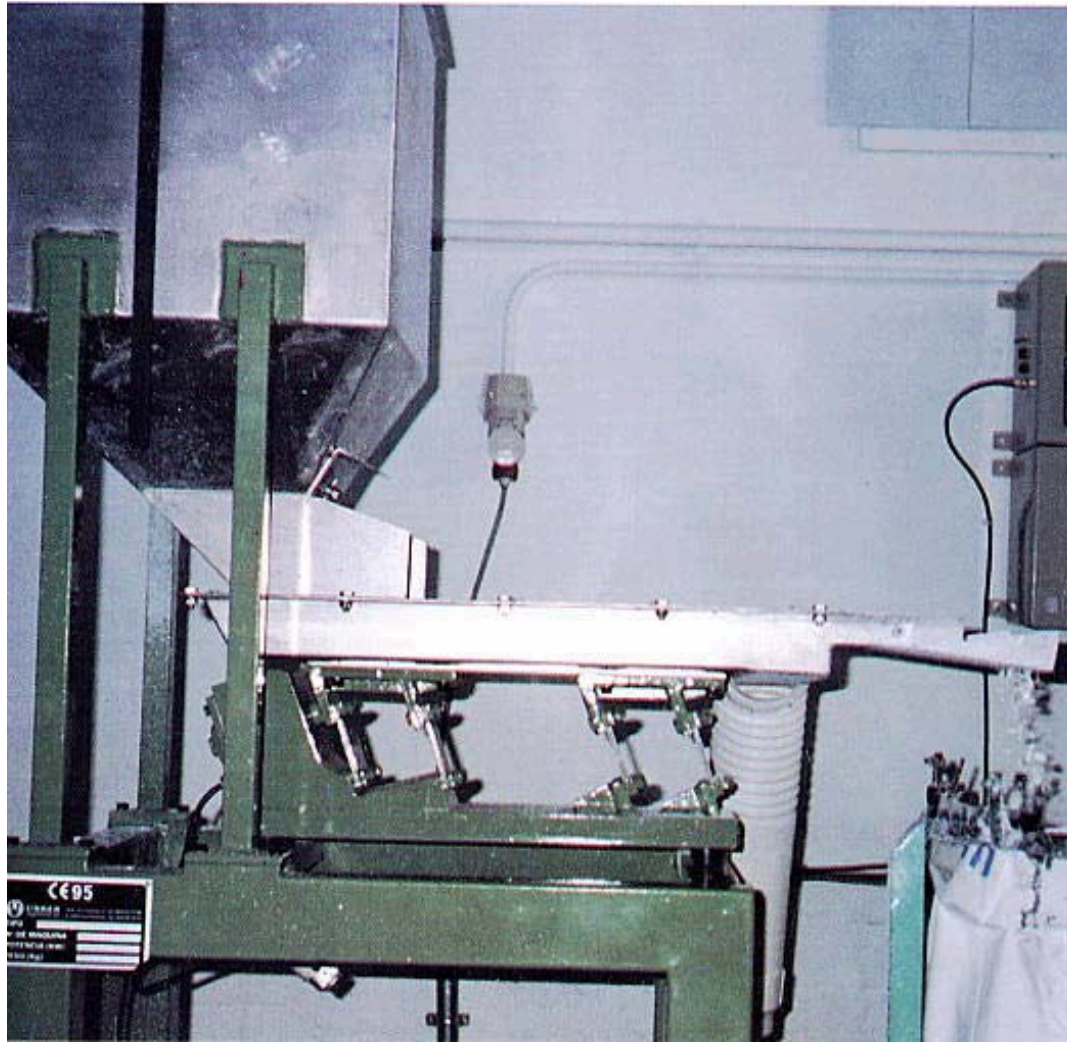




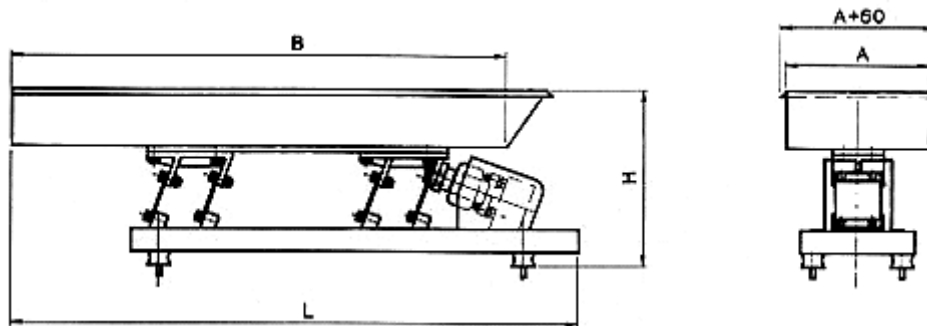
URBAR
ingenieros s.a.



Electromagnetic conveyors

- Precise transport for low flows.
- Continuous regulation.
- Equipped with one or several resonant spring groups.
- Trays can be open, closed, with outrigger or specials under request.
- Driven by an electromagnetic vibrator.

Electromagnetic conveyors. AM serie.



Technical characteristics

Type	Flow m ³ /h	Driving electromagnetic vibrator	Consumption		Dimensions		
			220 V A	380 V	A	B	H
AM 25/100	8	V-11	0,5	0,3	250	1000	325
AM 25/150	8	V-21	1,5	0,9	250	1500	425
AM 25/300	10	V-33	2,5	1,4	250	3000	500
AM 50/100	16	V-21	1,5	0,9	500	1000	425
AM 50/150	20	V-33	2,5	1,4	500	1500	500
AM 80/100	25	V-21	1,5	0,9	800	1000	425
AM 80/150	32	V-33	2,5	1,4	800	1500	500

The indicated types must be considered as an example. Any other tray can be designed.

The AM conveyors, equipped with Urbar V electromagnetic vibrators, supply a continuous flow, through a potentiometer installed in a control box.

When requiring a very precise flow, it is recommended to connect the equipment through a voltage stabiliser, to avoid the changes in the electric main.

The vibrators, in the standard version, are connected through the control box, to a single-phase 220V or 380V voltage at 50 or 60 Hz. Under request any other voltage or frequency can be supplied. The AM conveyors are regulated in the supply for their consumption to be minimum.

The trays can be made in any shape, even including a perforate plate. The outriggers will depend on any specific case.

They are usually installed to feed low-density products.

Typical applications for the AM serie are: feeding conveyors or screens, dosing products, automatic feeding in weighing systems, feeding pieces in continuous process machines...



URBAR
ingenieros s.a.

Ctra. Villabona-Asteasu, km 3
Apartado 247
Tel. (+34) 943 691 500
Fax (+34) 943 692 667
E-20159 **Asteasu**

www.urbar.com
E-mail: urbar@urbar.com